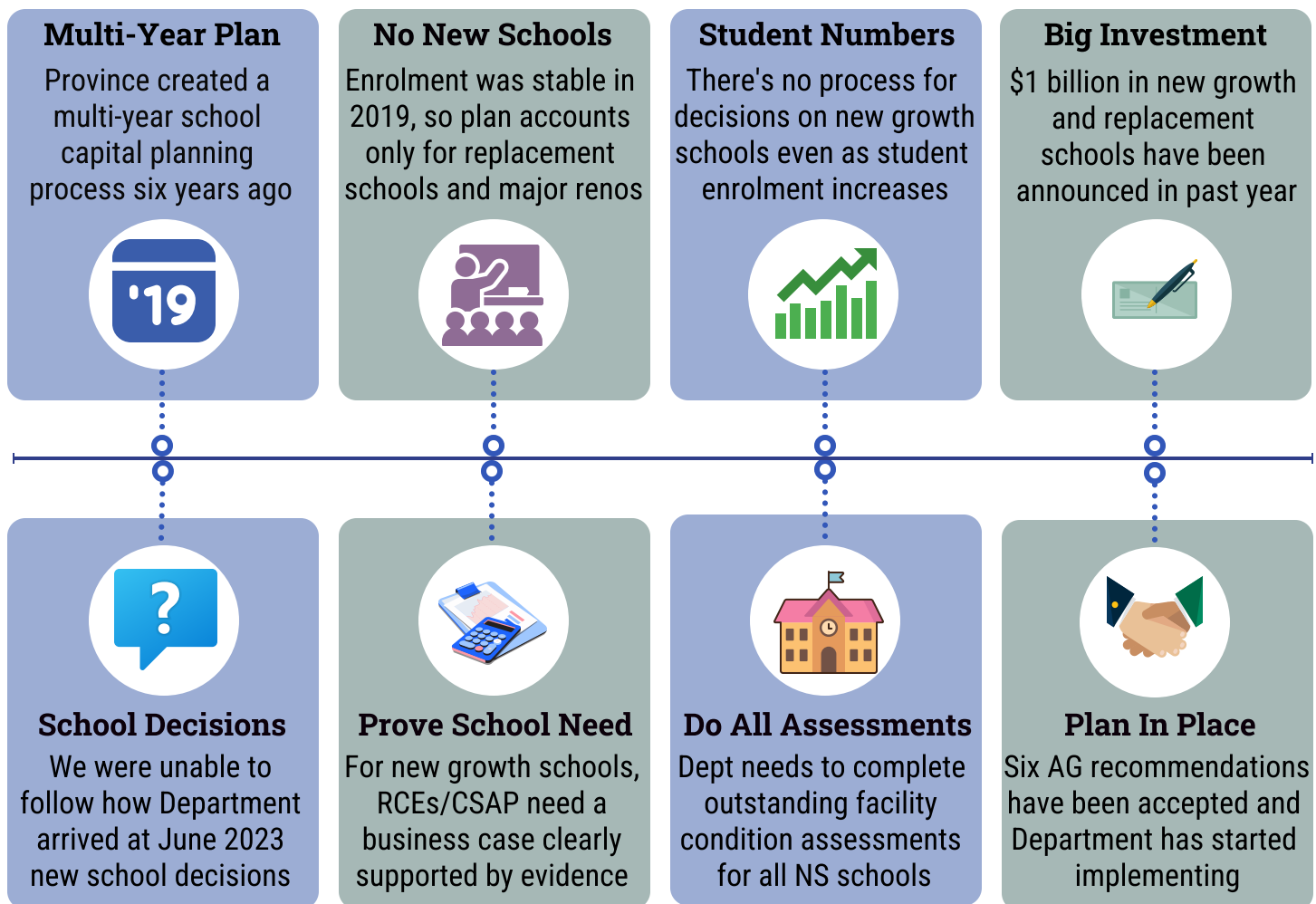


# REPORT HIGHLIGHTS

## School Capital Planning



### Key Recommendation From the New AG Report

We recommend the Department of Education and Early Childhood Development update the school capital planning process to require Regional Centres for Education and the Conseil scolaire acadien provincial to submit a business case supported by evidence for all new growth schools, including information on:

- enrolment projections and related capacity;
- modular and portable use;
- boundary reviews;
- grade reconfigurations; and
- upcoming housing developments in the area including timelines and related impact on capacity.